

# MANUAL CHAIN HOIST



Strong & Stable

QUERKRÖNN Manual Chain hoist is a mechanical lifting device designed for the manual handling of heavy loads. It typically consists of a chain mechanism, a durable housing, and a hand-operated lever.

High Durability



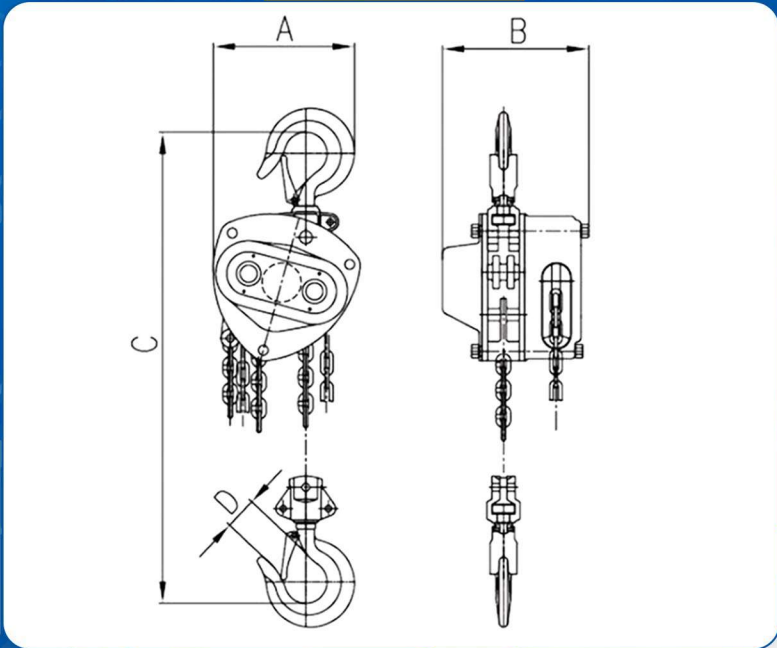
# MANUAL

# CHAIN BLOCK

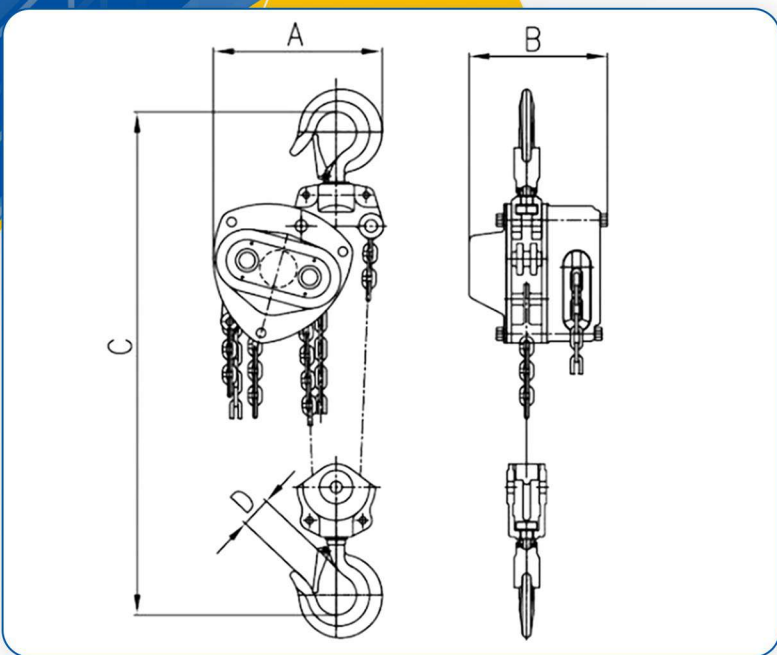
**TYPE** VCB SERIES

VERKRONN Chain Block is a mechanical lifting device designed for efficiently and safely raising or lowering heavy loads. Comprising a sturdy chain and pulley system, the chain block hoist features a manual hand-operated chain to control the lifting process. The hoist is compact, versatile, and commonly used in various industrial settings, construction sites, and workshops.

Single Chain



Double Chain

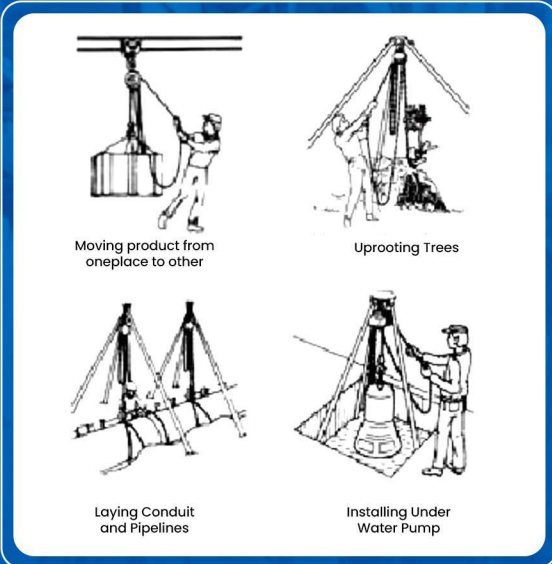




# MANUAL

# CHAIN BLOCK

**TYPE** VCB SERIES



High Durability



High Precision



Strong & Stable

Its robust construction, combined with a reliable braking system, ensures precise load control and enhanced safety during lifting operations. Chain block hoists are valued for their simplicity, durability, and ability to handle diverse lifting tasks with ease, making them a popular choice in material handling applications.

## Product Detail

Model	VCB-0.5K	VCB-1K	VCB-1.5K	VCB-2K	VCB-3K	VCB-5K	VCB-10K	VCB-20K	VCB-30K	
Rated Load(T)	0.5	1	1.5	2	3	5	10	20	30	
Standard Lift (m)	2.5	2.5	2.5	2.5	3	3	3	3	3	
Test Load (T)	0.75	1.5	2.25	3	4.5	7.5	12.5	25	37.5	
Efforts Required at Capacity (N)	262	324	395	330	402	430	438	438	442	
Diameter of Load Chain (mm)	5	6	7.1	6	7.1	10	10	10	10	
No. of Load Chains	1	1	1	2	2	2	4	8	10	
Dimensions (mm)	A.	120	147	181	158	202	228	373	638	703
	B.	116	136	147	136	148	178	178	195	397
	C.	285	332	410	470	550	640	737	1022	1050
	D.	28	32	38	40	44	50	64	82	82
Net Weight (Kg)	7	10	15	23	23	38	68	160	235	
Extra Weight per Meter of Extra Lift (Kg)	1.5	1.8	2	3.2	3.2	5.3	9.8	19.6	23.9	



# MANUAL LEVER BLOCK

**TYPE** VLB SERIES

### Product Features

1. Guide slots guard against jamming and slipping
2. Roller and ball bearing construction reduces friction
3. Automatic double pawl-braking system
4. Hardened swivel latch hooks
5. SelfJocking lever controls the pulling direction
6. 360° handle rotation and pivot & swivel top hook for easy rigging
7. Al-steel construction for extreme durability
8. Hook is assembled with high-strength locking fasteners
9. Rubber handle grip on lever for comfort and anti-skidding
10. One-hand operation with the best free chaining available



Automatic double pawl braking system to secure loads at any height

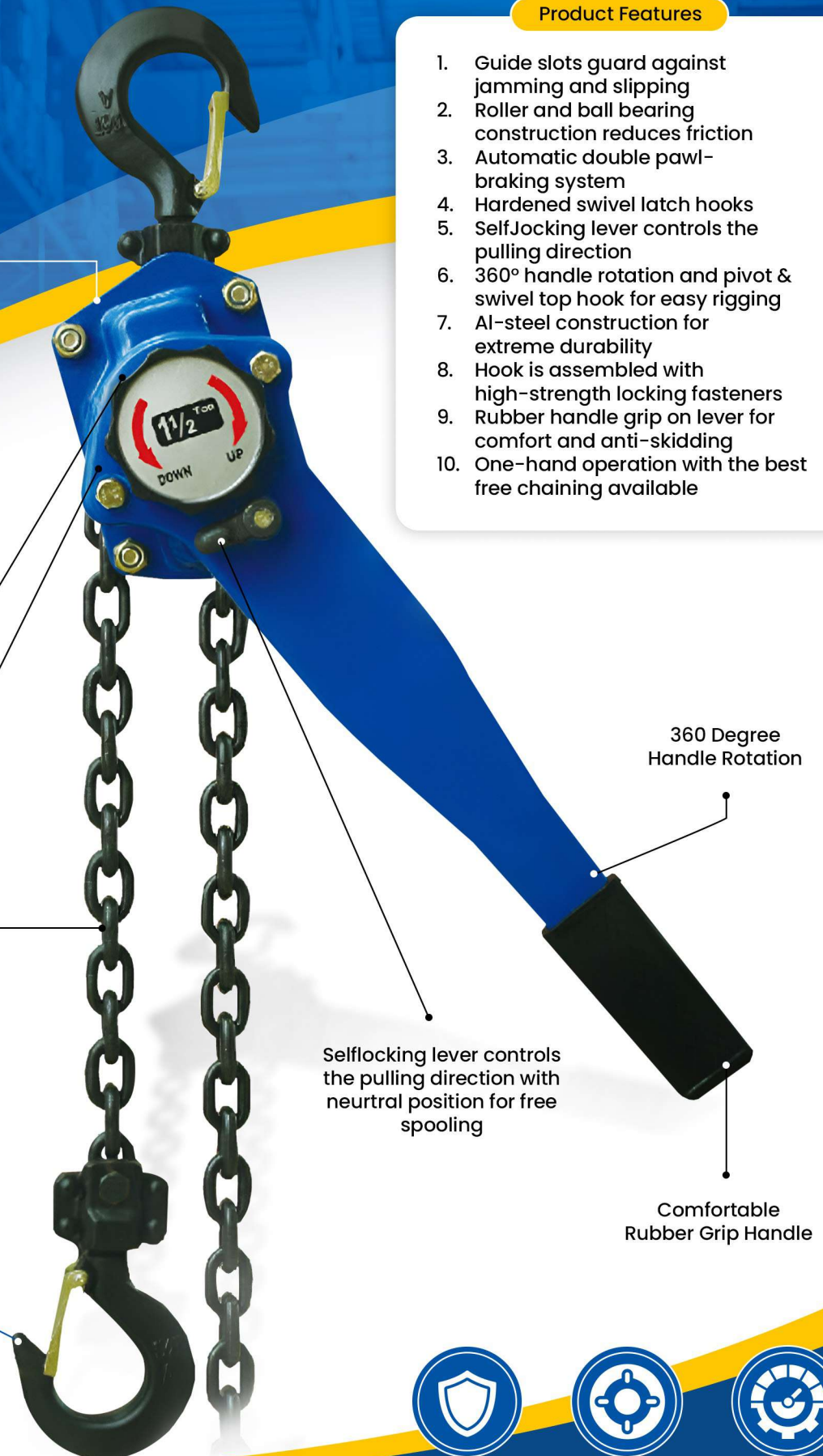
Enclosed gear housing suitable for outdoor use

Channeled guide slots guard against jamming and slipping

Black anodized grade 80 chain certified for vertical lifting



Swivel hook with high-strength locking fasteners



360 Degree Handle Rotation

Selflocking lever controls the pulling direction with neutral position for free spooling

Comfortable Rubber Grip Handle



High Durability



High Precision



Strong & Stable

# LEVER BLOCK

## TYPE VLB SERIES

VERKRONN Lever block hoist is a manual lifting device designed for efficiently and safely handling heavy loads. It consists of a lever mechanism and a chain, providing a mechanical advantage for lifting objects. Users operate the lever to activate the lifting action, making it a versatile and portable solution for various applications in construction, maintenance, and industrial settings.



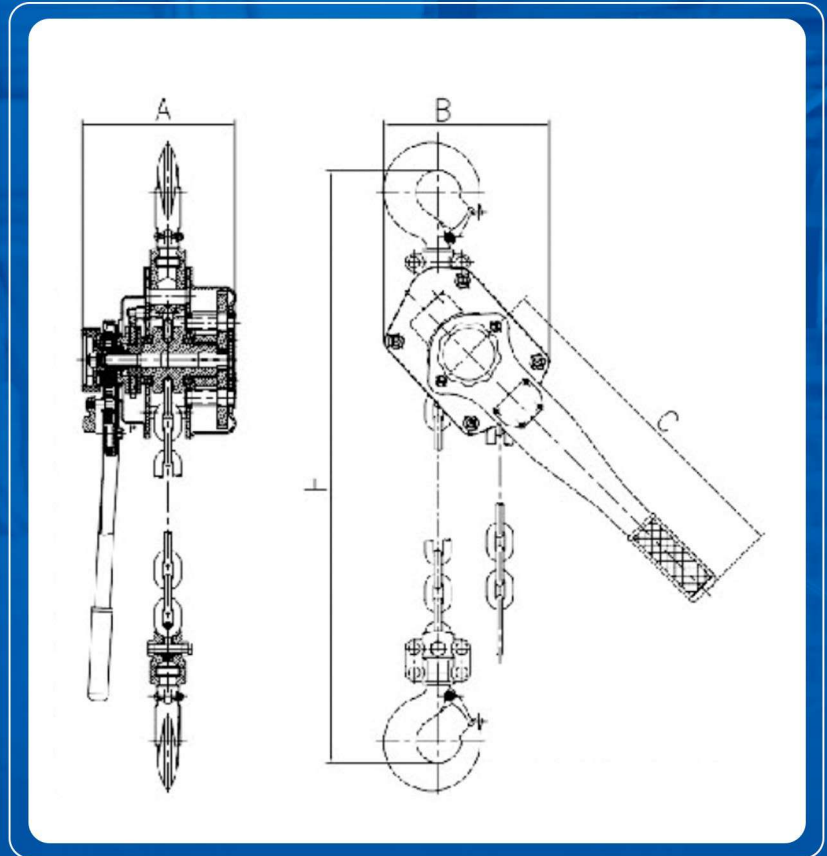
High Durability



High Precision



Strong & Stable



### Detail Products

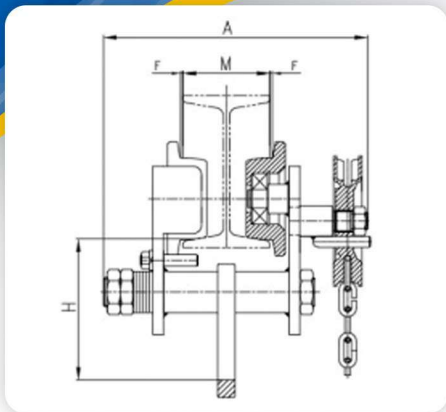
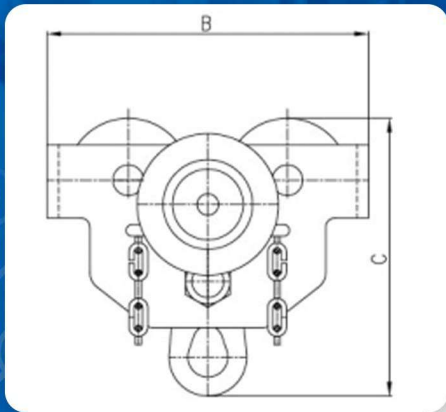
Model	VLB-7.5CB	VLB-15CB	VLB-30CB	VLB-60CB
Rated Load (T)	0.75	1.5	3	6
Test Load (T)	0.95	1.875	3.75	7.5
Standard Lift (m)	1.5	1.5	1.5	1.5
Min. Distance Between Two Hooks (mm)	290	385	477	550
Efforts Required at Capacity (N)	196	220	325	343
No. of Load Chains	1	1	1	2
Diameter of Load Chain (mm)	6x18	8x24	10x30	10x30
Dimensions (mm)	A.	148	174	193
	B.	135	160	209
	C.	295	423	423
	H.	290	385	477
Extra Weight per Meter of Extra Lift (Kg)	0.82	1.43	2.21	4.42
Net Weight (Kg)	7	11	20	30



# GEARED TROLLEY

**TYPE** VGT SERIES

Technical Drawing



**Product Features**

Mainly used in factories, mines, piers, docks, warehouses and rooms, installation of equipment, loading and unloading goods, applies in particular to situations without power equipment maintenance work.

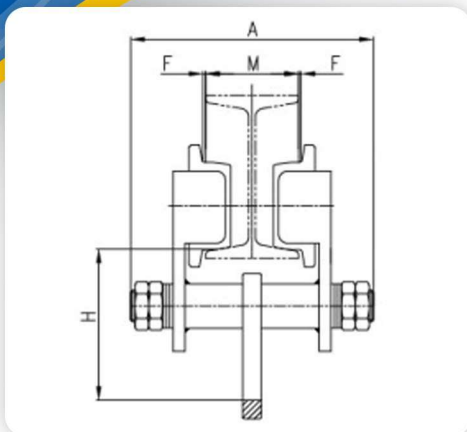
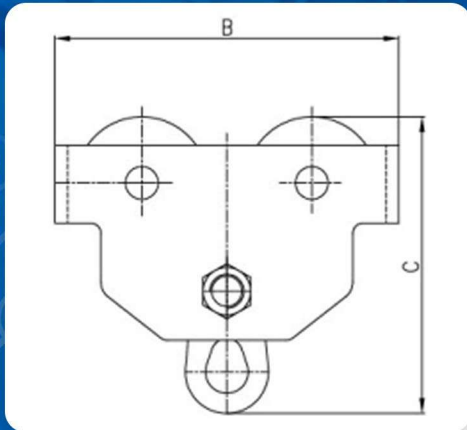
**Product Detail**

Model	Rated Load (T)	Test Load (T)	Chain Pull to Lift Full Load (N)	Dimensions (mm)				I-Beam Recommended	Net Weight (Kg)
				A	B	C	H		
VGT-0.5	0.5	0.75	60	248	196	190	108	68-126	9
VGT-1	1	1.5	80	280	236	211	115	80-146	13
VGT-2	2	3	140	318	273	236	130	80-168	18
VGT-3	3	4.5	150	340	320	295	164	88-168	25
VGT-5	5	7.5	170	365	366	334	177	100-170	39
VGT-10	10	15	320	410	389	460	237	122-203	70
VGT-20	20	30	340	475	798	575	300	122-203	186
VGT-30	30	37.5	352	392	625	551	260	150-250	245

# PLAIN TROLLEY

**TYPE** VPT SERIES

Technical Drawing



**Product Features**

Mainly used in factories, mines, piers, docks, warehouses and rooms, installation of equipment, loading and unloading goods, applies in particular to situations without power equipment

**Product Detail**

Model	Rated Load (T)	Test Load (T)	Dimensions (mm)				I-Beam Recommended	Net Weight (Kg)
			A	B	C	H		
VPT-0.5	0.5	0.75	208	196	190	108	68-126	5.5
VPT-1	1	1.5	242	236	211	115	80-146	9.5
VPT-2	2	3	280	273	236	130	80-168	13.5
VPT-3	3	4.5	300	320	295	164	88-168	25
VPT-5	5	7.5	316	366	334	177	100-170	36
VPT-10	10	15	343	389	460	237	122-203	68



# INDOTARA®

PT. INDOTARA PERSADA

## Our Marketing Office and After Sales Service Center

### Head Office

50/F, Menara BCA Grand Indonesia  
Jl. M.H. Thamrin No.1  
Jakarta Pusat 10310

021 - 5011 2226

dhc@indotara.id



### Semarang Office

Wisma HSBC Lt. 6 Suite 609  
Jl. Gajah Mada No.135  
Semarang, Jawa Tengah 50134

024 - 40 300 891

smg.dhc@indotara.id



### Marketing Office

APL Tower 6th Floor No. 6 Central Park,  
Jl. Letjen S. Parman Kav 28,  
Jakarta Barat - 11440

021 - 5011 2226

dhc@indotara.id



### Medan Office

Sutomo Tower Lantai 5H  
Jl. Sutomo Ujung No.28,  
Kota Medan, Sumatera Utara 20235

061 - 50 300 593

mdn.dhc@indotara.id



### Graha Indotara

Millenium Industrial Estate  
Jl. Millenium 22 Blok R3 No. 1  
Cikupa, Tangerang - Banten 15720

021 - 5011 2226

dhc@indotara.id



### Makassar Office

Fajar Graha Pena Lt. 5  
Jl. Urip Sumoharjo No. 20,  
Makassar - South Sulawesi 90234

021 - 5011 2226

mks.dhc@indotara.id



### Bandung Office

Wisma HSBC Lt. 6 Suite B  
Jl. Asia Afrika No. 116  
Bandung, Jawa Barat 40112

021 - 5011 2226

bdg.dhc@indotara.id



### Balikpapan Office

Panin Tower Lt. 8 - Grand Sudirman  
Jl. Jendral Sudirman No.7 Klandasan Ilir,  
Balikpapan Kota, Kalimantan Timur 76114

021 - 5011 2226

bpp.dhc@indotara.id



### Surabaya Office

Japfa Indoland Center, Tower I Lt. 10/1008  
Jl. Jendral Basuki Rahmat 129-137  
Surabaya 60271

021 - 5011 2226

sby.dhc@indotara.id



### Bali Office

Benoa Square Lt. 2  
Jl. Bypass Ngurah Rai No. 21 A Kedonganan,  
Kuta Badung - Bali Indonesia 80361

021 - 5011 2226

bali.dhc@indotara.id



### Yogyakarta Office

Hartono Mall Yogyakarta Lt. 3  
Kaliwaru, Condongcatur,  
Sleman, Yogyakarta 55281

021 - 5011 2226

yog.dhc@indotara.id



### Singapore Office

Marina Bay Financial Centre Tower 3  
17F, 12 Marina Boulevard  
Singapore - 018982

021 - 5011 2226

sing.dhc@indotara.id

